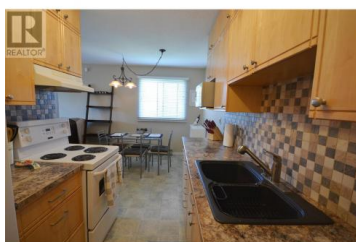




150 Skaha Place 412 Penticton British Columbia

Main South

\$255,000



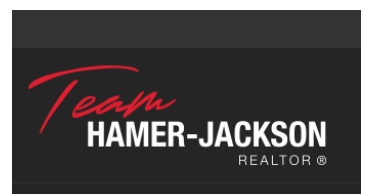
Check out this charming 2 bed, 1 bath condo, perched on the top floor corner with a southeast-facing view. The space has been updated with newer flooring throughout—linoleum in the high-traffic areas and laminate in the living room and bedrooms. The kitchen has been remodeled to impress, featuring cupboards that reach the ceiling, a sleek black composite sink, plenty of counter space, and bright wood cabinets with a tiled backsplash. An extra dining room window brings in even more natural light. Strata fee of \$419.60/month cover water & hot water, garbage, sewer & building insurance. This condo is in an unbeatable location, just steps from Skaha Park and Beach. Plus, it's close to transit and all the south end amenities you need. It's the perfect blend of comfort and convenience! (id:6769)

Danielle Chapman

Royal LePage Locations West

Phone: (250) 490-6989

<https://teamchapman.ca/>



RE/MAX Kelowna
100-1553 Harvey Avenue
Kelowna, BC,
Canada