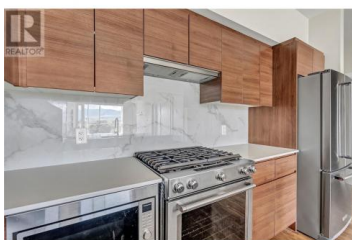




1925 Enterprise Way 412 Kelowna British Columbia

Glenmore

\$479,000



Welcome to this stylish and spacious 2-bedroom, 2-bathroom condo perfectly situated in the highly sought-after Glenmore neighbourhood of Kelowna. Just steps from London Drugs, Choices Markets, and a host of shops, cafes, and services, this location offers unbeatable convenience with a true community feel. Inside, you'll love the airy ambiance created by soaring ceilings and oversized windows that fill the space with natural light. The open-concept layout features a sleek island kitchen with stainless steel appliances, ideal for entertaining or enjoying casual meals at the breakfast bar. The primary suite includes a full ensuite, while the second bedroom and bathroom provide great flexibility for guests, a home office, or roommates. Additional highlights include - Access to a common rooftop patio - perfect for relaxing or socializing with panoramic views - Use of the HYATT's indoor pool and hot tub, giving you resort-style amenities just moments from your door. Secure building with modern finishes and thoughtful design throughout. Whether you're looking for a comfortable home or a smart investment, this unit checks all the boxes. Don't miss your chance to own in one of Kelowna's most desirable locations! All room measurements are approximate. Please book a private tour now, contact your local realtor. (id:6769)

Brodie Young

Engel & Volkers South Okanagan

Phone: (604) 818-6770



RE/MAX Kelowna
100-1553 Harvey Avenue
Kelowna, BC,
Canada

