



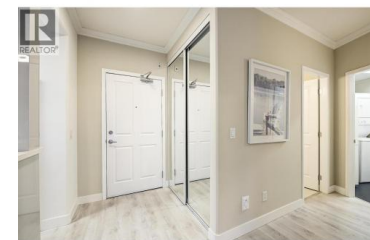
1960 Enterprise Way 412 Kelowna British Columbia

Dilworth Mountain

\$499,900



Welcome to this beautifully UPDATED TOP-FLOOR 2-bedroom, 2-bathroom condo in the highly sought-after Meadow Brook Estates, where pride of ownership is immediately evident. This home has been meticulously maintained and thoughtfully renovated, offering a truly turn-key living experience. The bright, open-concept layout is filled with natural light and overlooks Mill Creek, providing peaceful views and a serene setting. The primary bedroom features a lovely updated ensuite, while the second room includes a cabinet (Murphy) bed, making it ideal for a DEN/OFFICE. The renovated kitchen showcases stainless steel appliances, quartz countertops, pull-out drawers, and ample storage. Updated flooring flows throughout, complemented by beautifully renovated bathrooms with quartz counters. A functional laundry room with added cabinetry enhances everyday convenience. Additional upgrades include tile replacement around the fireplace and a newer central vacuum system. This immaculate home includes one underground heated parking stall and a storage locker conveniently located on the second floor. Meadow Brook Estates offers exceptional amenities, including a clubhouse, fitness room, craft room, outdoor heated pool, and a newly renovated GUEST SUITE located on the same floor as the unit. Featuring a king-size bed, ensuite, and reasonable nightly rates, it provides the perfect accommodation fo...



RE/MAX Kelowna
 100-1553 Harvey Avenue
 Kelowna, BC,
 Canada

Bobbi Hora

RE/MAX Kelowna

Phone: (250) 864-6426

