

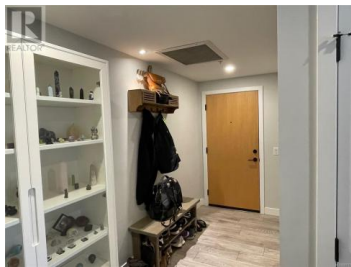


950 Whirlaway Crescent 412 Langford British Columbia

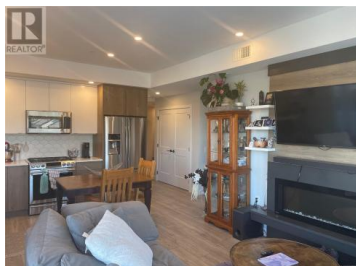
Residence One

\$585,000

MLS#860709



This is a unique top-floor corner suite that comes with a huge deck spanning 460 square feet is perfect for outdoor living and entertaining. The private terrace has a sunny exposure to the south and east. The suite has 764 square feet of bright and contemporary interior living space. Its efficient junior two-bedroom layout features high ceilings, a spacious entry hall, a well-appointed kitchen with a gas range, stylish millwork and quartz countertops, an electric fireplace with a built-in shelving surround, a roomy bathroom with modern finishes, and on-demand hot water. The suite also boasts an economical heat pump system for both heating and cooling. Bedrooms are separated by the open-concept living area, providing great privacy. It includes secure parking, a separate storage locker, a gym, and bike storage. Pets, rentals, and BBQs are permitted. The suite is located just a few minutes from Costco and Millstream Village Shopping Centre. (id:6769)



Peter Watts

Pemberton Holmes Ltd. (Dun)

Phone: (250) 709-4007

<http://peterwatts.ca/>



RE/MAX Kelowna
100-1553 Harvey Avenue
Kelowna, BC,
Canada