

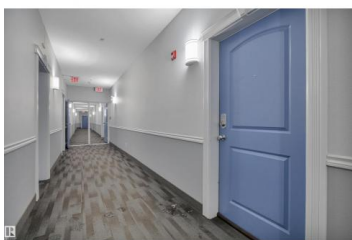
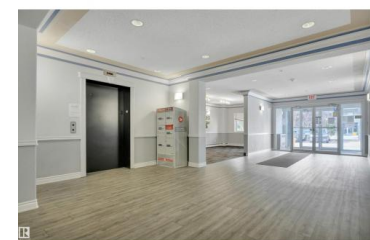
## Edmonton Alberta

South Terwillegar

**\$212,500**



TOP FLOOR FACING THE TREES! MOVE IN READY! 2 PARKING STALLS! (1 UNDERGROUND, 1 SURFACE). Searching for a private top floor suite with numerous cosmetic updates? This 866 sq ft 2 bed, 2 bath, tastefully designed unit may be it! Feat: newer paint, vinyl plank flooring, lighting, covered deck, & more! Classic open concept layout unites the living / kitchen space; ample natural lighting ideal for entertaining during summer BBQs & hangouts. L shaped kitchen w/ island for meal prep & storage. 2 good sized bedrooms including the primary bed w/ double closet & 3 pce ensuite. Additional 4 pce bath & in suite laundry for added convenience. TITLED SURFACE PARKING & ASSIGNED UNDERGROUND PARKING for your 2 vehicles is a rare find. Condo fees of \$529.57 include heat, water / sewer, gym access, & professional management. Quick access to the Henday & Whitemud makes Ospin Terrace a winner! Terrific value, a must see! (id:6769)



### Kevin B. Doyle

RE/MAX Elite

Phone: (780) 314-8001

<http://kevindoyle.remax.ca/>



RE/MAX Kelowna  
100-1553 Harvey Avenue  
Kelowna, BC,  
Canada