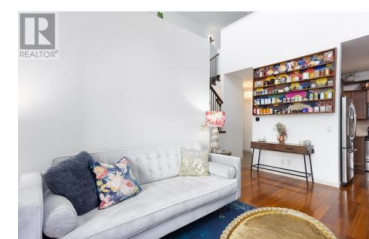


2142 Vasile Road 413 Kelowna British Columbia

Springfield/Spall

\$599,900



In a fantastic location, just steps to Orchard Plaza/grocery shopping and minutes from Downtown, Mission Creek Greenway, rail trail and much more. Walk or bike to amenities, recreation, and nature! This exquisite TOP FLOOR, two-story LOFTED penthouse spans just over 1,500 sqft, features soaring ceilings and beautiful hardwood floors throughout, making it bright and open with 2 SECURE PARKING STALLS. The gourmet kitchen includes granite countertops, wood cabinetry, tile backsplash, stainless appliances, and under-cabinet lighting. The spacious dining area offers extra storage with a pantry, while the living room boasts built-in bookshelves and a electric fireplace, perfect for creating a cozy ambiance. The east-facing patio highlights stunning mountain and city views and includes a gas BBQ hookup. The lofted primary suite with decorative electric fireplace includes a large walk-in closet and private 4-piece ensuite with a separate shower and soaker tub. The second bedroom (on main floor) offers vaulted ceilings, a walkthrough closet, and a 3-piece cheater ensuite. The den also features vaulted ceilings & is perfect for an office or reading nook. The in-suite laundry room includes a HE hot water tank and central furnace for heating + cooling (new in 2020). This home also boasts convenient built-in vac, ample storage and storage locker. Additional visitor parking. Welcome to th...



RE/MAX Kelowna
100-1553 Harvey Avenue
Kelowna, BC,
Canada

Colin Krieg

RE/MAX Kelowna

Phone: (250) 870-8600

<http://www.kriegfamily.ca/>

