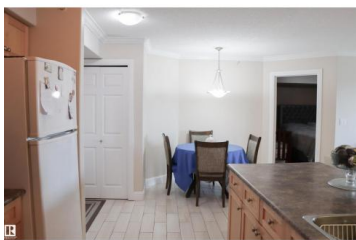




Edmonton Alberta

Pembina

\$219,900



Spacious & bright south-facing top floor condo in the sought-after Palisades Park Villas! This well-maintained, pet-friendly building offers a fantastic layout with 2 bedrooms, 2 full bathrooms, air conditioning & titled parking stall with attached storage. The open-concept floor plan features a functional kitchen with maple cabinetry, plenty of counter space & a raised breakfast bar that flows nicely into the living area. Large patio doors lead to a sunny private balcony complete with a gas BBQ hookup. The primary bedroom includes a walk-in closet & its own 4-piece ensuite, while the second bedroom is generously sized & located near the additional full bathroom. In-suite laundry adds extra convenience. Condo fees include heat & water & the location is hard to beat close to parks, restaurants, shopping & everyday amenities. An excellent opportunity for first-time buyers, down sizers, or investors looking for affordability without compromising comfort. (id:6769)

Tony T. Estephan

RE/MAX Elite

Phone: (780) 242-7412

<http://www.ynottony.ca/>



RE/MAX Kelowna
100-1553 Harvey Avenue
Kelowna, BC,
Canada