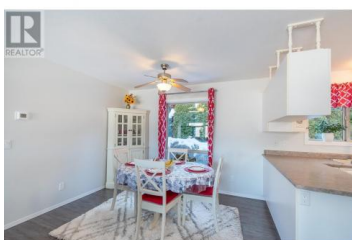


## 1510 Trans Canada Highway 42 Sorrento British Columbia

Sorrento

**\$399,000**



LIVE THE SHUSWAP from this custom built, 2 Bedroom 2 Bathroom updated dble wide modular home! Located in Sorrento's Deer Ridge Estates MH Park. This home is located on the end of a quiet cul-de-sac and offers stunning views of Shuswap Lake. Only minutes away from recreational activities the Shuswap has to offer! An excellent open floor plan with bedrooms located on opposite ends, both offering lake and mountain views & large built in storage organizers & removable noise reduction window inserts. Primary with ensuite and both bathrooms include updated toilets, sinks, skylights, and laminate flooring. Kitchen includes fridge, washer/dryer & new stove, new light fixtures, new sink and facet. Large, covered deck offers the opportunity for you to have meals outside while taking in the views! Landscaped yard showcases an English garden to one side, flowers, & a lilac tree in front of the house with flower trims on the grass rock, a must see in spring and summer. Lawn is manicured, and for the gardener room for a raised garden bed at back of house with a shed to hold all your garden tools. Attached garage fits one car along with large storage capacity, & a second parking spot to the side of house for visitors. Additional parking on the cul-de-sac for additional visitors too. Seller will consider selling key furnishings of home. Park is age restricted to 55+ & offers a great sense o...



**RE/MAX Kelowna**  
100-1553 Harvey Avenue  
Kelowna, BC,  
Canada

### Nik Roughton

Coldwell Banker Executives Realty

Phone: (778) 212-3737

[http://www.vernonandcoldstreamho  
mefinder.com/](http://www.vernonandcoldstreamho<br/>mefinder.com/)

