



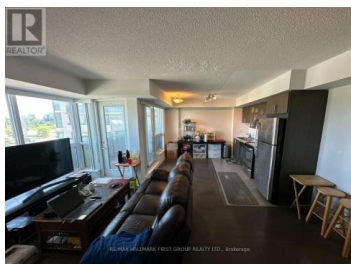
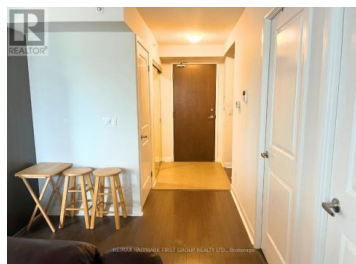
75 Norman Bethune Avenue 422 Richmond Hill Beaver Creek Business Park Ontario

Beaver Creek Business Park

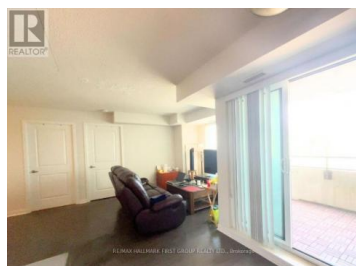
\$2,500



RE/MAX HALLMARK FIRST GROUP REALTY LTD., Brokerage



Welcome to this amazing Location in Richmond Hill. 1+1 Condo that sits right next to Highway 7 and 404. Public Transit at the doorstep. This Open Concept Condo, provides lots of Natural light, with large windows. Right next to restaurants, schools and business offices. Includes 1 parking space that is underground. (id:6769)



ALIM SOVANI

RE/MAX HALLMARK FIRST GROUP REALTY LTD.

Phone: (905) 831-3300

<http://www.sovanirealty.com/>



RE/MAX Kelowna
100-1553 Harvey Avenue
Kelowna, BC,
Canada