



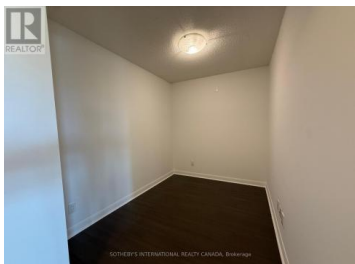
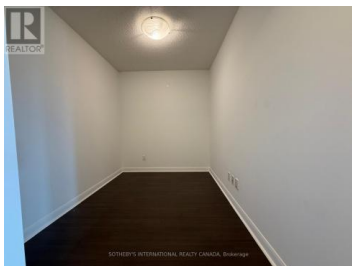
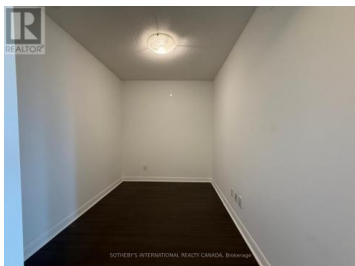
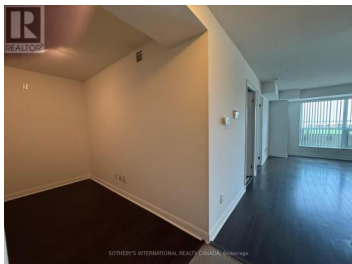
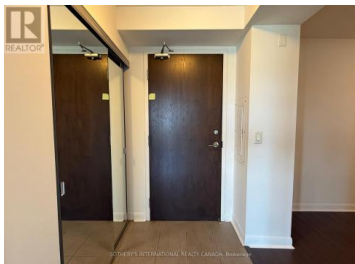
## 75 Norman Bethune Avenue 422 Richmond Hill Beaver Creek Business Park Ontario

Beaver Creek Business Park

**\$2,450**

SOTHEBY'S INTERNATIONAL REALTY CANADA, Brokerage

Condos.ca



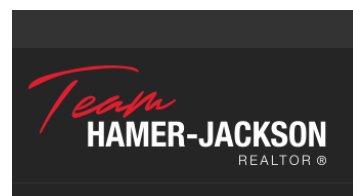
An exquisite 1-bedroom plus den unit, ideally situated for ultimate convenience in Richmond Hill. This open-concept unit offers a seamless flow, providing a versatile canvas for your personalized touch. It includes 1 parking space and a locker, adding to your comfort and convenience. Located right next to Highways 404 and 7, your commute will be a breeze, and you're just minutes away from the vibrant East Beaver Creek Plaza, placing you in the heart of all Richmond Hill has to offer. Experience the perfect blend of comfort and accessibility in this highly sought-after neighborhood. Don't miss the opportunity to make this standout property your new home! (id:6769)

### ROBBY SINGH

SOTHEBY'S INTERNATIONAL REALTY  
CANADA

Phone: (416) 856-2621

<http://www.robbsingh.com/>



RE/MAX Kelowna  
100-1553 Harvey Avenue  
Kelowna, BC,  
Canada