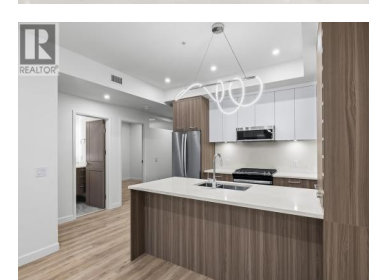
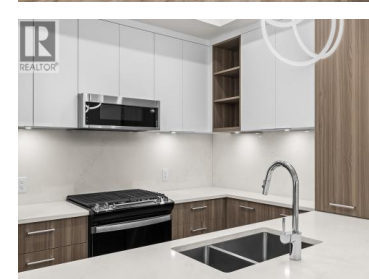




630 Boynton Place 424 Kelowna British Columbia

Glenmore

\$699,900



IMPROVED PRICING ON EVERY HOME. SAVINGS UP TO \$160,000. Brand New. Move-In Ready. And anything but ordinary. Welcome to Eminence at Knox Mountain. This 2-bed, 2-bath home offers approx. 904 sqft of smart, sophisticated living designed for people who appreciate clean lines & thoughtful details. Inside, 9-ft ceilings and expansive windows create a bright, open feel. The Earth colour palette interior blends warm wood tones, striking black accents & glass balcony features. The kitchen is a standout with premium 2-tone cabinetry, quartz countertops, stainless steel appliances, a gas range & a unique wine storage feature. An in-suite laundry room adds bonus storage, while designer LED lighting, a statement entry door, solid-core interior doors, & custom shelving & closet solutions complete the polished finish. You'll also enjoy underground parking with your own private bike cage. The building's common rooftop viewing terrace gives all new meaning to Kelowna's Patio Season. Pet-friendly & Nature at your doorstep with direct access to Knox Mountain's hiking & biking trails. Downtown Kelowna and Glenmore are minutes away. Buy new & save. Eligible buyers may qualify for the Property Transfer Tax exemption & 1st time home buyer GST exemption. Move-In Ready 1-Bed to 2-Bed + Den homes available. Sales Centre open Saturday & Sunday 12-4pm or by appointment. Photos/Igude taken from simila...



RE/MAX Kelowna
 100-1553 Harvey Avenue
 Kelowna, BC,
 Canada

Darcy Nyrose

RE/MAX Kelowna

Phone: (250) 575-1946

<http://www.kelownarealestatepros.com/>

