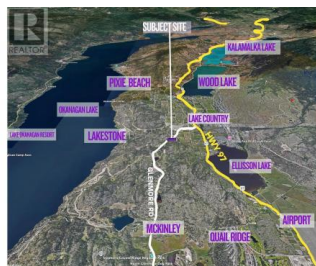
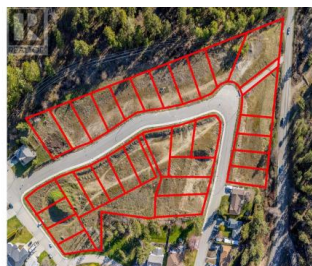




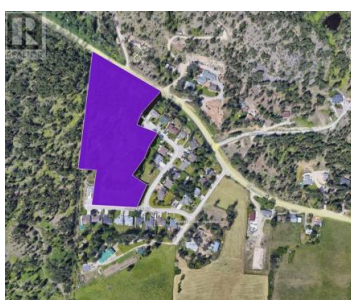
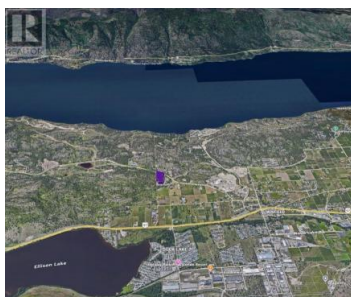
4345 Glenmore Road Lake Country British Columbia

Lake Country South West

\$9,500,000



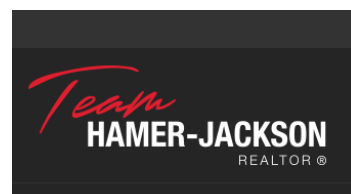
Court-Ordered sale for a proposed 31-lot subdivision in a prime location at the south end of Lake Country/North Glenmore. This development offers 31 formerly approved lots, awaiting the completion of an approximately 700-meter offsite sewer section. The lots are paved and curbed, located close to schools and shopping, and allow for legal suites. Applications and approvals are needed from Lake Country, with engineering contacts available to assist in the process. These are generously sized lots, averaging 6800-7000 sq ft with 55-60' average frontages. The property will be sold in "as is where is" condition. This is a unique opportunity to acquire prime development land in a highly desirable location, with close proximity to Lakestone, Highway 97, the airport, UBC, and downtown. (id:6769)



Gary Judge

Realtymonx

Phone: (250) 899-3101





RE/MAX Kelowna
100-1553 Harvey Avenue
Kelowna, BC,
Canada