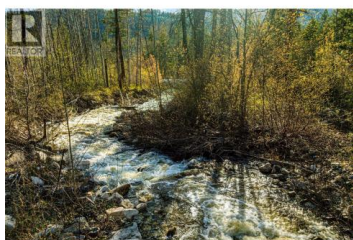
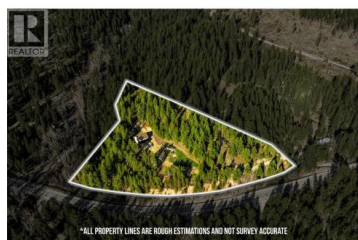


## 4350 Highway 33 Other Beaverdell British Columbia

Beaverdell/Carmi

**\$699,900**



Escape to nature in this incredible 7-acre private retreat in Beaverdell--perfect for outdoor enthusiasts, recreation lovers, or anyone seeking peace and privacy in the mountains. Southfacing exposure provides beautiful sunlight year-round, while wildlife, towering trees, and a year-round creek with water rights create a truly serene setting. The property also includes two natural wells, plus ready-to-use firewood on site for added convenience. The updated 2,000 sq. ft. home features 4 bedrooms, 3 bathrooms, fresh paint upstairs, laminate flooring throughout, and two cozy wood-burning fireplaces. Enjoy your morning coffee on the extended covered veranda, surrounded by nature. The basement is partially unfinished, offering space to customize, with recently epoxied floors for a clean finish. Garbage and recycling pickup is done weekly at the driveway, and school bus pickup for both elementary and high school is located at the end of the driveway--a rare perk for rural living. With potential to redevelop (buyer to verify with the city), this property is more than a home--it's an opportunity. Book your showing today. (id:6769)

**Rickneel Maharaj**

Pathway Executives Realty Inc (Yale Rd)

Phone: (604) 798-7847



**RE/MAX Kelowna**  
100-1553 Harvey Avenue  
Kelowna, BC,  
Canada

