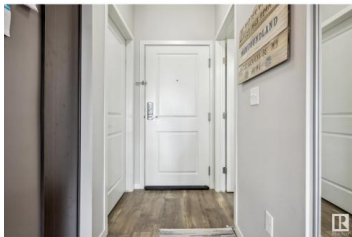
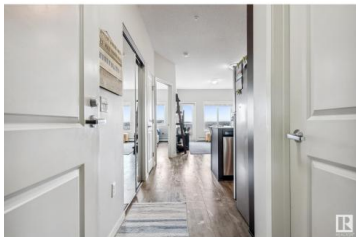


## Edmonton Alberta

Rutherford (Edmonton)

# \$189,900

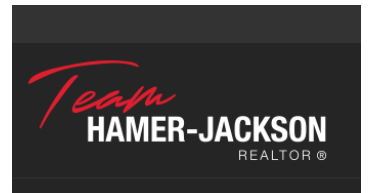


TOP FLOOR CONDO with PARK/RAVINE VIEWS! You are going to be impressed with this beautiful ONE BEDROOM condo in Crossroads at Rutherford. 2017 build, 9' ceilings, extended cabinets to ceiling, Luxury Vinyl Plank flooring throughout, Quartz Countertops, SS Appliances, Huge 15'9x 9'8 Master Bedroom with Large walk in closet and a private balcony with views! The efficient layout grants this unit with LOW CONDO FEES. This building comes with a car wash and TITLED HEATED UNDERGROUND PARKING STALL with STORAGE CAGE. Located close to many amenities, grocery stores and shops. Whether you are a first time buyer, investor or downsizer, this property has something for everyone! (id:6769)

**Jeffrey C. Lewis**

RE/MAX Elite

Phone: (780) 239-1948



RE/MAX Kelowna  
100-1553 Harvey Avenue  
Kelowna, BC,  
Canada