



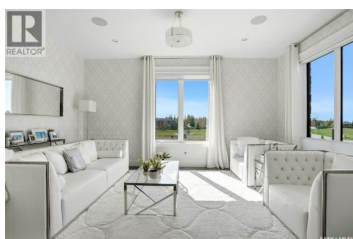
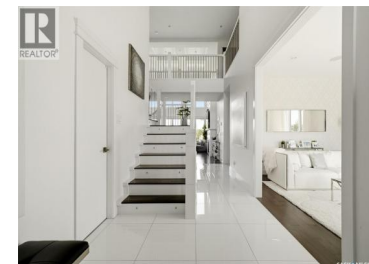
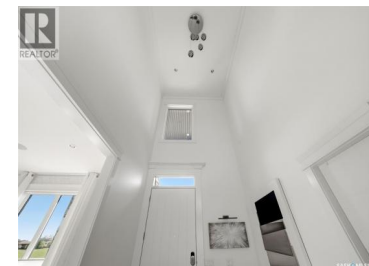
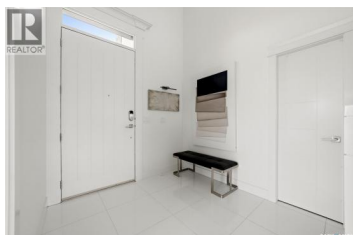
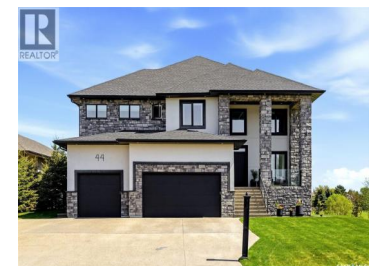
REALTOR®



White City Saskatchewan

\$2,250,000

SASK • MLS®



Experience luxury living in this stunning custom-built 2 storey walkout in White City, backing walking paths, parks and green space. Offering 3,916 sq ft across the main and second levels and an additional 1,992 sq ft in the walkout basement. This exceptional home was designed with every detail in mind. Step into the foyer, where soaring ceilings, natural light and a spacious walk-in closet create a stunning first impression. Next is the elegant flex room with dual aspect perfect for relaxing or reading. Then step into the spectacular great room with 18 ft ceilings, a custom fireplace and floor-to-ceiling windows that showcase breathtaking views. The impressive kitchen has a 14x5 island, premium appliances including dual ovens and dual dishwashers, pot filler, corner pantry and extensive custom cabinetry. The adjoining dining area offers a fireplace and stunning views. The main floor also features an oversized executive office with custom built-ins and a double-sided fireplace shared with the great room. Last are 2 powder rooms, a mudroom with laundry and direct access to the garage. Upstairs, the luxurious primary bedroom offers a spa-inspired ensuite and an extraordinary dressing room with a central island and custom built-ins. A 2nd bedroom has its own ensuite and walk-in closet, while 2 additional bedrooms--each with walk-in closets--share a bathroom. 2nd floor laundry a...



RE/MAX Kelowna
100-1553 Harvey Avenue
Kelowna, BC,
Canada

Lynne Bobyck

Century 21 Dome Realty Inc.

Phone: (306) 790-3686

<https://www.lynnbobyck.com/>

