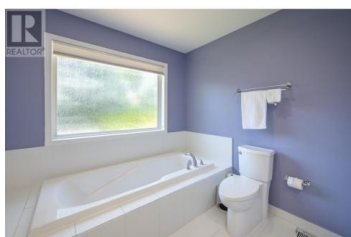




444 Ridge Place Penticton British Columbia

Husula/West Bench/Sage Mesa

\$620,000



Welcome to 444 Ridge Pl, Penticton. This remodelled rancher is located on the upper part of Red Wing providing a quiet area up on the bench. 2 bed, 2 bath on 1647 sqft this home is nicely laid out with open concept living/dining/kitchen with another family room area to entertain. Gas fireplace in living room, every room has been updated for a modern feel! Kitchen has gas stove top, built in oven and so much storage built in! Built in space off kitchen can be used as a breakfast nook or office - make it your own! Large primary bed with 4pc ensuite and soaker tub. Laundry room off double garage with plenty of storage. Covered porch off living room to your private backyard. Red Wing is an adult gated community 40+, leased until 2036, \$220/mth HOA fee, pets upon approval. Please contact the listing agent for lease details or to book your showing! (id:6769)

Wes Stewart

Royal LePage Locations West

Phone: (250) 486-2794



RE/MAX Kelowna
100-1553 Harvey Avenue
Kelowna, BC,
Canada