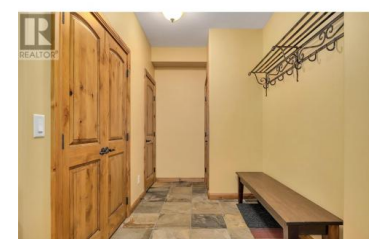




7700 Porcupine Road 4510 Big White British Columbia

Big White

\$883,000



Elevate your mountain lifestyle with this exceptional Top Floor, Corner 2-bedroom, 2-bathroom condo perched at the summit of Big White. Perfectly positioned for ski enthusiasts, this residence offers true ski-in/ski-out convenience with access to five lifts just steps from your door. Immerse yourself in timeless elegance, where Alder wood accents, granite countertops, and wrought iron finishes blend seamlessly to create an atmosphere of refined sophistication. The gourmet kitchen, complete with stainless steel appliances, is a haven for culinary creativity, while custom wine storage adds a touch of exclusivity. Relax and recharge by the stunning floor-to-ceiling gas fireplace, the heart of the living space, as you take in panoramic views of the breathtaking mountainscape through every window. Step outside to your private hot tub, where you can soak in the serene surroundings and let the day's adventures melt away. Whether you're seeking an investment opportunity, a vacation retreat, or your forever mountain home, this property offers unmatched luxury, convenience, and style in one of Big White's most coveted locations. (id:6769)

Jesse East

RE/MAX Kelowna

Phone: (250) 862-1234

<http://www.jesseeast.com/>



RE/MAX Kelowna
100-1553 Harvey Avenue
Kelowna, BC,
Canada

