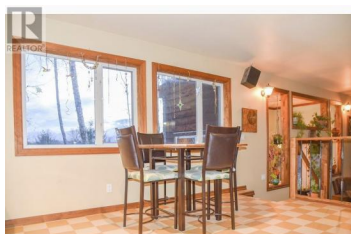
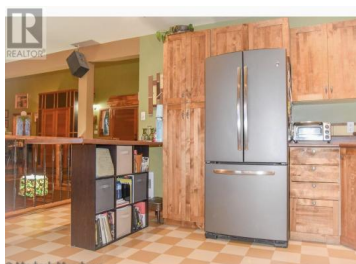




4534 DUTCH VALLEY Road Terrace British Columbia
\$1,199,000



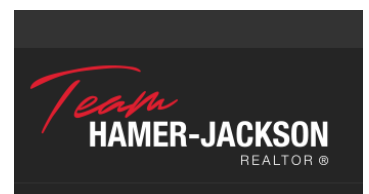
Warmth and Character are abundant in this architecturally designed custom home with 32x44 ft carriage house/shop with guest suite situated on a private 1.25 acre parcel which offers lovely mountain views and valley down below. Lrg covered veranda, soaring vaulted ceilings, sunken living room, cozy library with fireplace are just a few of the impressive features of this special property. Inviting kitchen offers many work spaces, coffee bar, loads of cupboards and stainless-steel appliances. Deluxe master suite offers private balcony, 3 pce ensuite with soaker tub and loft area. Basement offers a family rm, 4 pce bath, gorgeous bdrm and plumbing for either wet bar or kitchenette. Detached 32x44 ft carriage home offers dog washing station, wood working shop and 2 bdrm guest suite with sundeck. (id:6769)

Suzanne Gleason

RE/MAX Coast Mountains

Phone: (250) 615-2155

<http://www.remax-terrace.bc.ca/>



RE/MAX Kelowna
 100-1553 Harvey Avenue
 Kelowna, BC,
 Canada