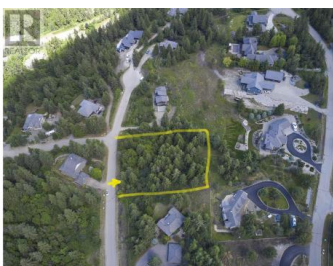
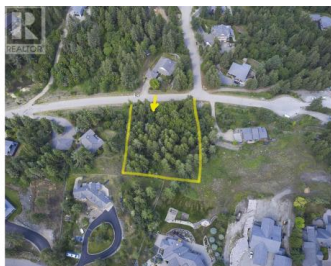
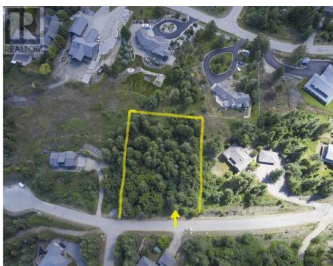




3022 Coachwood Crescent 46 Coldstream British Columbia

Mun of Coldstream

\$469,000



Welcome to Whisper Ridge, where estate-style living meets natural beauty. This 1.24-acre lot offers the perfect canvas for your dream home, set in a serene and exclusive community. Nestled among mature trees, this spacious lot ensures privacy and tranquility, providing a retreat from the hustle and bustle of everyday life. Imagine waking up to breathtaking views, surrounded by nature, yet conveniently close to all amenities. Don't miss this rare opportunity to create a personalized sanctuary in Whisper Ridge. Great location close to schools and only 10 minutes to Kalamalka lake! Serves at lot line. Contact us today to schedule a viewing and start planning your future in this beautiful, private haven. (id:6769)

Kyla Mulder

Royal LePage Downtown Realty

Phone: (250) 309-4455

<http://www.okanagan4sale.com/>



RE/MAX Kelowna
100-1553 Harvey Avenue
Kelowna, BC,
Canada