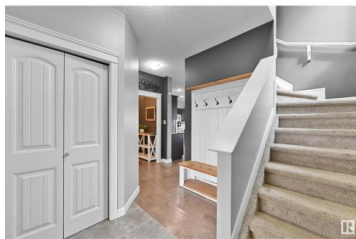




Fort Saskatchewan Alberta

Westpark_FSAS

\$449,900



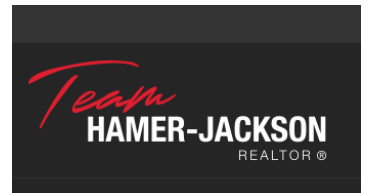
Welcome to 46 Woodbridge Link in the heart of West Park. This 1,659 sq. ft. half-duplex offers a functional layout with three bedrooms, a double attached garage, and central air conditioning for year-round comfort. The main floor boasts a spacious open-concept design with granite countertops, stainless steel appliances, and ample natural light. Upstairs features a convenient laundry room and a large primary suite complete with a full ensuite and walk-in closet. Enjoy the generous backyard—perfect for relaxing or entertaining. Ideally located close to all major amenities, schools, the dog park, and the river valley trail system—this home combines comfort and convenience in one of Fort Saskatchewan's most sought-after neighborhoods. (id:6769)

Thomas J. Lowe

RE/MAX Edge Realty

Phone: (780) 966-3234

<http://www.tomlowe.ca/>



RE/MAX Kelowna
100-1553 Harvey Avenue
Kelowna, BC,
Canada