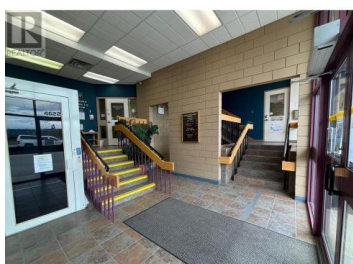




4622 GREIG Avenue Terrace British Columbia
\$999,900



Impressive commercial space located in the heart of Terrace, BC. This building not only has great street appeal it has expansive street frontage on a busy street in downtown Terrace. With three levels all boasting multiple entrances, office spaces, separate reception areas, offices, kitchenettes and multiple washrooms this property is naturally laid out to accommodate multiple businesses and functions. There is secured parking at the back of the building plus street parking out front. This property has been well maintained inside and out and comes with long term tenants. * PREC - Personal Real Estate Corporation (id:6769)

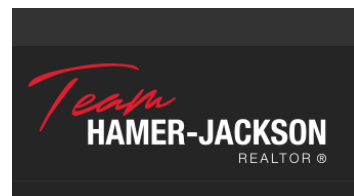


Wendy Hadley

RE/MAX Coast Mountains

Phone: (250) 638-1400

<http://wendyhadley.ca/>



RE/MAX Kelowna
 100-1553 Harvey Avenue
 Kelowna, BC,
 Canada