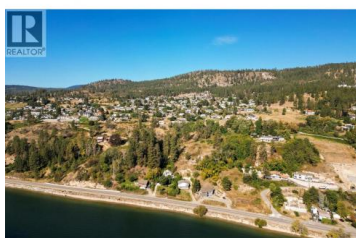
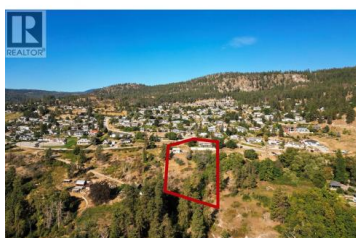


4649 Princeton Avenue Peachland British Columbia

Peachland

\$1,550,000



Incredible Investment Opportunity - Over \$600,000 Below Assessed Value! This stunning 2.85-acre property offers unmatched panoramic views of Okanagan Lake and is priced to sell. Located in the desirable community of Peachland, the land is designated as "Medium Density Residential (RM4)" in the future Official Community Plan (OCP), opening the door for exciting development potential. At the heart of the property is a beautifully maintained 2,450 sq ft main home, featuring 3 bedrooms and 3 bathrooms, complemented by a charming carriage house--ideal for guests, rental income, or extended family. Situated along Princeton Ave, a key active transportation corridor, this location offers the perfect balance of tranquility and accessibility. Whether you're looking for a prime holding property or your dream lakeview residence, this one checks all the boxes. Key Highlights: Priced \$600,000+ below assessed value 2.85 acres with development potential (RM4 future designation) Spectacular lake views Spacious 3 bed / 3 bath main home + carriage house Future growth corridor along Princeton Ave Don't miss this rare opportunity--properties like this rarely come to market at such exceptional value. (id:6769)

Alexandra Axsen

The Agency Kelowna

Phone: (250) 870-2792

<https://www.theagencyre.com/region/kelowna>



RE/MAX Kelowna
100-1553 Harvey Avenue
Kelowna, BC,
Canada

