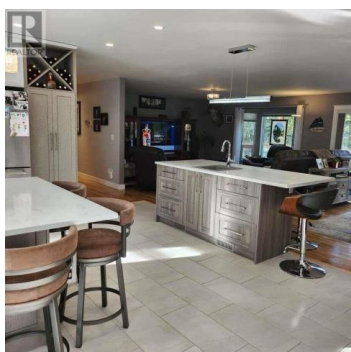
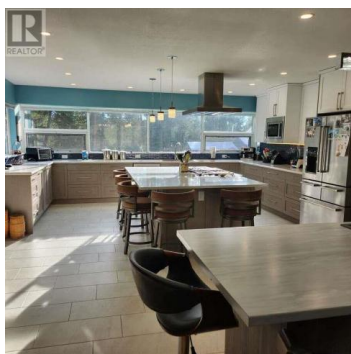
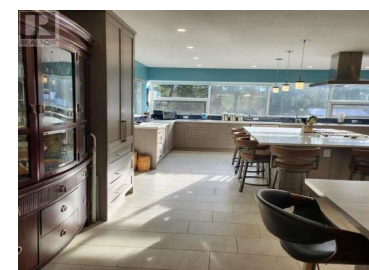
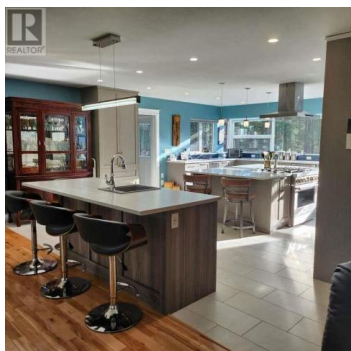
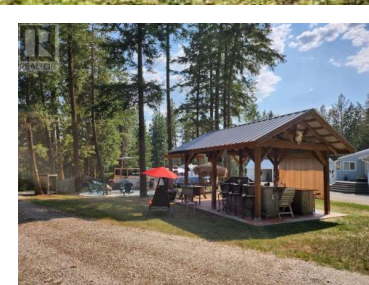




4700 Schubert Road Armstrong British Columbia

Armstrong/ Spall.

\$1,325,000



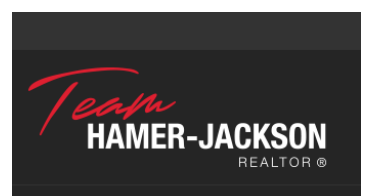
For more information, please click on Brochure button below. 1991 Home on 5.21 Acres in Spallumcheen/Armstrong. Nestled in the serene countryside of Spallumcheen/Armstrong, this expansive sq foot home offers a tranquil retreat on a sprawling 5.21-acre property. Built in 1991, this two-level (main + basement) residence boasts 5 bedrooms, 3.5 bathrooms, including a self-contained two-bedroom, one-bathroom basement unregistered suite for added versatility. Situated in an Agricultural Land Reserve (ALR) location, this property ensures the preservation of its natural surroundings by safeguarding against future nearby development. Enjoy the peace of mind knowing that your property perimeter is protected, providing an enduring sense of tranquility. The lush landscape surrounding the home resembles an oasis, with hundreds of tall, meticulously manicured Fir and Pine trees creating a private park-like setting. Whether you're seeking a peaceful sanctuary or an outdoor enthusiast's paradise, this property offers endless opportunities to explore and unwind amidst nature's beauty. Recent home inspection and septic reports available. Don't miss the chance to own this slice of rural paradise. (id:6769)

Darya Pfund

Easy List Realty

Phone: (888) 323-1998

<http://www.easylistrealty.ca/>





RE/MAX Kelowna
100-1553 Harvey Avenue
Kelowna, BC,
Canada