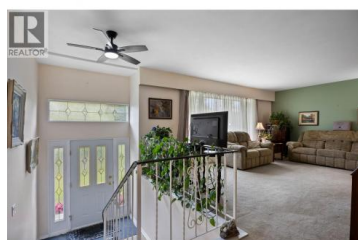




## 4742 Aspen Park Drive Kamloops British Columbia

Rayleigh

**\$779,900**



Spacious cathedral entry home on a massive lot in Rayleigh on the market for the first time ever. With an oversized entrance you are welcomed into this well maintained family home. Up the short set of steps are a large living room, dining area with access to the covered deck, bright and updated kitchen, grand main bedroom with walk-in closet and 3-pc ensuite, another bedroom and 4-pc bathroom. Also on the main level is an in-law suite with separate entrance featuring a bedroom and 4-pc bathroom, it's own kitchen and living/dining room. There is a door connecting to the house so could be part of the main living space as well. In the basement is another bedroom and 3-pc bathroom, large rec room, laundry room, storage room that could be another bedroom, bonus living room and access to the 14x46 work shop with outside entrance currently being used for storage. There is a space under the covered deck for more storage, large storage shed and additional shed on the property. With almost half an acre and a driveway long enough to park 3 cars back to back, there are endless possibilities for building a garage and parking all your toys. Desirable location close to the river in the quiet community of Rayleigh with a school near by and easy highway access. (id:6769)

### Richard Bates

eXp Realty (Kamloops)

Phone: (250) 682-1092

<http://www.richardbates.ca/>



RE/MAX Kelowna  
100-1553 Harvey Avenue  
Kelowna, BC,  
Canada

