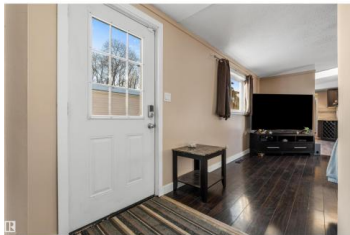




Rural Parkland County Alberta

Parkland Village

\$111,500



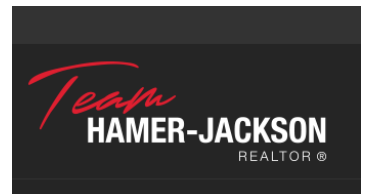
Expect the unexpected when you step into this grand single wide bungalow-style home. Spanning a very welcoming 1,224 sq ft of living space, it separates itself from the others with its walls completely finished with drywall, and adorning fresh neutral colours throughout. Follow the flow of dark laminate flooring from the immense front living room, into the cabinet-rich kitchen, where stainless steel appliances shine from the skylight overhead. Privately placed just past the laundry room, is the lavish primary bedroom, offering an immense space for king size sets, plush carpet, & a full 5pc ensuite with his 'n hers sinks and a soaker tub. On the other end of the home, you'll find two more bedrooms (one almost as big as the primary) freshly painted and finished with low-maintenance vinyl plank flooring; both are serviced by a 4pc main bathroom. The value of this rare find is escalated further by your own party-ready deck & the large fenced & landscaped corner lot that it all resides on. Two parking spaces! (id:6769)

Marty J. Weishaupt

Royal LePage Noralta Real Estate

Phone: (780) 850-1595

<http://movewithmarty.realtor/>



RE/MAX Kelowna
100-1553 Harvey Avenue
Kelowna, BC,
Canada