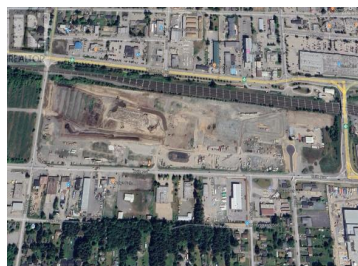




**4830 KEITH Avenue Terrace British Columbia**

**\$1,537,500**

KEITH



New Light Industrial lots now available in the heart of Terrace. Located along Keith Ave these are highly desirable lots to the region. Lots have both high visibility and excellent access, with the NSD Inland Port located behind the lot and Highway 16 only feet away. 4830 Keith (Lot 5) is a 2.37 acre lot. Build to suit by the seller is also an option. Inquire now for full information package. \* PREC - Personal Real Estate Corporation (id:6769)



**RE/MAX Kelowna**  
100-1553 Harvey Avenue  
Kelowna, BC,  
Canada

**Clint Dahl**

Royal LePage Aspire Realty

Phone: (250) 981-2070

<http://www.clintdahl.ca/>

