

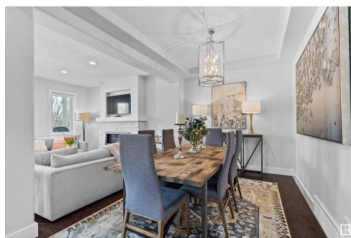
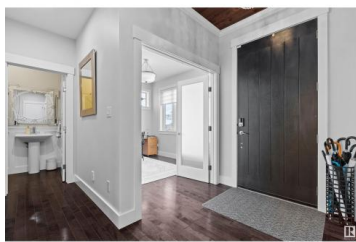
## Spruce Grove Alberta

Stoneshire

# \$829,000



Breaking the bar for luxury homes, this executive 2 storey is selectively located on a premium lot, with a pergola-perfect party deck, all backing the beauty of the manicured Links golf course. With 3,615 of air-conditioned living space, this home is the epitome of the lavish lifestyle you deserve. Decadent hardwood floors flow beyond the front office, 2pc powder-room & into the contemporary dining room, as fresh paint graces every wall. An array of windows illuminates the expansive open-concept main floor. The kitchen presents granite counters, high-end appliances & butler pantry, which compliments the sophistication of the living room, with its stone-faced fireplace. Private quarters upstairs consist of the primary bedroom, blessed by 5pc ensuite, along with 3 additional bedrooms, sharing the common area of a flex space; all serviced by same floor laundry & 4pc main bathroom. A finished basement offers 2 more bedrooms, rec room w/wet bar & 4th full bathroom. Triple tandem heated garage with epoxy floor! (id:6769)



### Marty J. Weishaupt

Royal LePage Noralta Real Estate

Phone: (780) 850-1595

<http://movewithmarty.realtor/>



**RE/MAX Kelowna**  
100-1553 Harvey Avenue  
Kelowna, BC,  
Canada