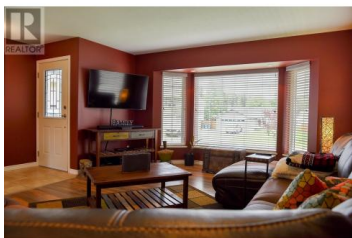
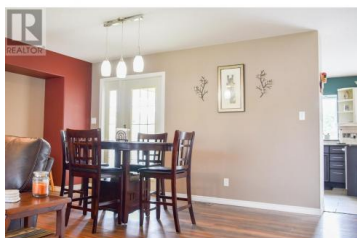
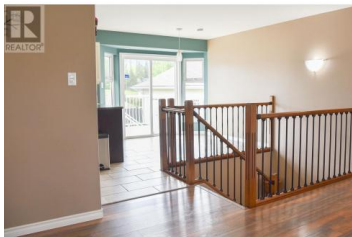




4934 TWEDLE Avenue Terrace British Columbia
\$799,900



Well cared for and well situated in a desirable, family friendly neighbourhood within 1 block of Uplands School you will find this 7 bedroom spacious home boasting room for everyone. Generous kitchen offers plenty of cabinets and counter space with NG stove and eating area which opens onto sundeck and fenced backyard. Entertaining is easy in living and dining room which can accommodate many around the table and features a fireplace perfect for cooler weather. Primary Brdm has WI closet, soaker tub in ensuite. 2 more bdrms up. Family rm down is great for movie nights. 4 more bdms, 4 pce bath, flex room and large cold storage pantry. The 30x24 ft detached shop is a perfect place to create projects. Oversized garage, triple paved driveway, raised garden boxes, this place offers a nice package. (id:6769)

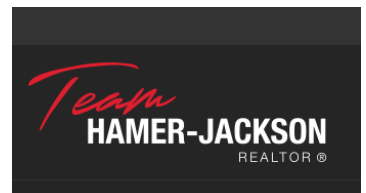


Suzanne Gleason

RE/MAX Coast Mountains

Phone: (250) 615-2155

<http://www.remax-terrace.bc.ca/>



RE/MAX Kelowna
 100-1553 Harvey Avenue
 Kelowna, BC,
 Canada