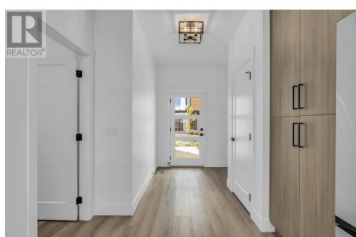
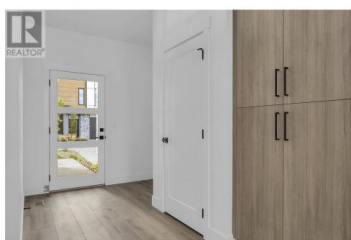




## 2835 Canyon Crest Drive 5 West Kelowna British Columbia

Shannon Lake

**\$949,900**



**\*\*EDGE VIEW AT TALLUS RIDGE SHOWHOME OPEN SAT & SUN 12-3PM\*\***

Welcome to Edge View at Tallus Ridge, the best value townhome community in West Kelowna! Home #5 is the last end-home rancher walk-out in the community and sits at approx 2418 sq ft. Overlooking Shannon Lake, it's your opportunity to enjoy the best of the West Kelowna lifestyle. With the primary bedroom on the main floor, enjoy quick access to the kitchen, living/dining area, and laundry room. The primary ensuite includes a deluxe soaker tub, double sink vanity with under-cabinet lighting, semi-frameless glass shower stall, and a walk-in closet. The high-end modern kitchen includes premium quartz countertops, a slide-in gas range stove, a stainless steel dishwasher, and a refrigerator. Downstairs you'll find 2 additional bedrooms and a full bath, a flex room, and a large recreation room. Relax on your partially covered deck and lower patio with amazing views of Shannon Lake and enjoy the convenience of a side-by-side garage. Advanced noise-canceling Logix ICF Blocks built into the party wall for superior durability and insulation. 1-2-5-10 Year New Home Warranty, meets Step 4 of BC's Energy Step Code. Shannon Lake is a 5-minute drive to West Kelowna shopping, restaurants, entertainment, and close to top-rated schools. Escape to nature with a small fishing lake, family-friendly golf course & plenty of hiking/biking...



**RE/MAX Kelowna**  
100-1553 Harvey Avenue  
Kelowna, BC,  
Canada

**Darcy Nyrose**

RE/MAX Kelowna

Phone: (250) 575-1946

<http://www.kelownarealestatepros.com/>

