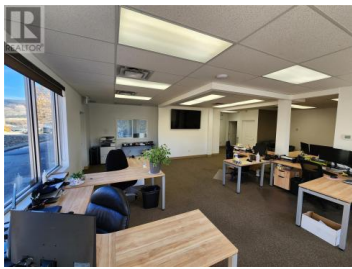


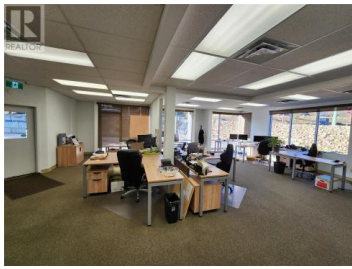
215 Neave Road 5 & 6 Kelowna British Columbia

Rutland North

\$16



Opportunity to lease approximately 3,376 square feet of ground floor office and warehouse area. Unit #5/6 offers newly finished open concept work area with private offices, boardroom and rear warehouse. The property is located on the corner of Neave Road and Hollywood Road N with excellent exposure and onsite parking. (id:6769)

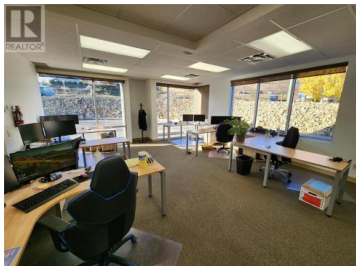
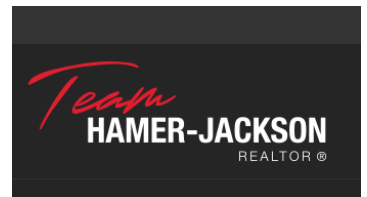


Jason Wills

Venture Realty Corp.

Phone: (250) 300-5477

<http://www.venturecommercial.ca/>



RE/MAX Kelowna
100-1553 Harvey Avenue
Kelowna, BC,
Canada