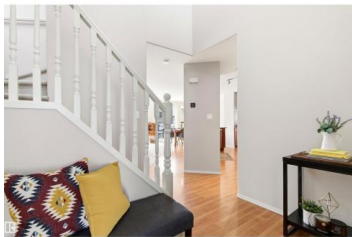


Sherwood Park Alberta

Foxboro

\$500,000



Tucked into a quiet cul-de-sac in Family-Friendly Foxboro, this front attached garage 2-storey offers over 1,630 sq ft above grade with an attached double garage and functional family layout. The bright main floor features a spacious living room with fireplace, LARGE dining area, pantry, convenient main floor laundry (generous mud-room!) and powder room. 3 bedrooms upstairs: including a spacious primary suite with walk-in closets and private ensuite. NEW ROOF 2025 and ALL NEW APPLIANCE PACKAGE 2026! The basement is framed with electrical roughed in offering a beautiful start to your finished basement! PRIVATE SUNNY SOUTH BACKYARD (Fully fenced) and Air Conditioning! Fantastic location close to parks, schools, trails, shopping and commuter routes, this is an excellent opportunity at this price point! (id:6769)

Ricky D. Hill

RE/MAX Elite

Phone: (780) 718-5608

<http://www.riverbendricky.com/>



RE/MAX Kelowna
100-1553 Harvey Avenue
Kelowna, BC,
Canada