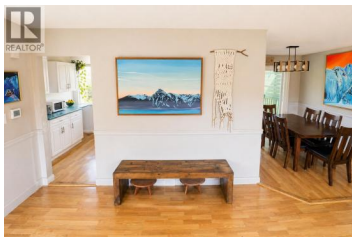




**5010 LANFEAR Drive Terrace British Columbia**  
**\$547,000**

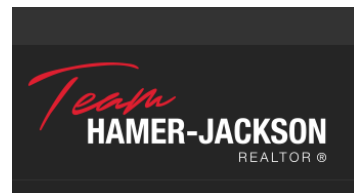


Move-in ready family home located between two parks, schools and at the entrance of the Howe Creek walking trail. Incredible mountain views in both directions. The main living area is bright and open with a large south facing window and patio off the kitchen to your large fenced backyard. There are 3 bedrooms upstairs with a 2 pc ensuite. Downstairs has another bedroom and 2 pc bathroom. The main bathroom was updated in 2024, Hot water tank 2023, new furnace, windows, siding and heat pump with AC. There is a closed in garage with plenty of storage and another enclosed storage shed under the patio with electrical service. The extra large driveway has through access to the backyard for RV or boat parking. The backyard has 2 cherry trees, raspberry canes, and garden beds. (id:6769)

**Lindsey Turner**

RE/MAX Coast Mountains

Phone: (250) 613-7031



RE/MAX Kelowna  
 100-1553 Harvey Avenue  
 Kelowna, BC,  
 Canada