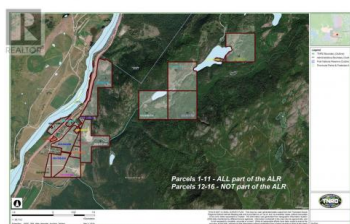




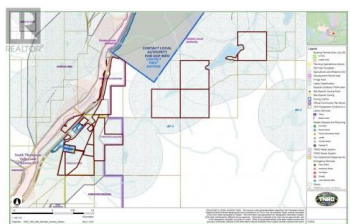
## 5031 WILLOW Road Kamloops British Columbia

Pritchard

# \$7,500,000



Parcel #	Tract/Map/Section	Acreage	Parcel ID	Zoning	Status	CDP Information	
						CDP Name	CDP Status
1-11	ALL part of the ALR	11.0	11.0	ALR	Yes	Not in CDP	
12-16	NOT part of the ALR	16.0	16.0	ALR	No	Not in CDP	
17-20	ALL part of the ALR	20.0	20.0	ALR	Yes	Not in CDP	
21-24	ALL part of the ALR	24.0	24.0	ALR	Yes	Not in CDP	
25-28	ALL part of the ALR	28.0	28.0	ALR	Yes	Not in CDP	
29-32	ALL part of the ALR	32.0	32.0	ALR	Yes	Not in CDP	
33-36	ALL part of the ALR	36.0	36.0	ALR	Yes	Not in CDP	
37-40	ALL part of the ALR	40.0	40.0	ALR	Yes	Not in CDP	
41-44	ALL part of the ALR	44.0	44.0	ALR	Yes	Not in CDP	
45-48	ALL part of the ALR	48.0	48.0	ALR	Yes	Not in CDP	
49-52	ALL part of the ALR	52.0	52.0	ALR	Yes	Not in CDP	
53-56	ALL part of the ALR	56.0	56.0	ALR	Yes	Not in CDP	
57-60	ALL part of the ALR	60.0	60.0	ALR	Yes	Not in CDP	
61-64	ALL part of the ALR	64.0	64.0	ALR	Yes	Not in CDP	
65-68	ALL part of the ALR	68.0	68.0	ALR	Yes	Not in CDP	
69-72	ALL part of the ALR	72.0	72.0	ALR	Yes	Not in CDP	
73-76	ALL part of the ALR	76.0	76.0	ALR	Yes	Not in CDP	
77-80	ALL part of the ALR	80.0	80.0	ALR	Yes	Not in CDP	
81-84	ALL part of the ALR	84.0	84.0	ALR	Yes	Not in CDP	
85-88	ALL part of the ALR	88.0	88.0	ALR	Yes	Not in CDP	
89-92	ALL part of the ALR	92.0	92.0	ALR	Yes	Not in CDP	
93-96	ALL part of the ALR	96.0	96.0	ALR	Yes	Not in CDP	
97-100	ALL part of the ALR	100.0	100.0	ALR	Yes	Not in CDP	



16 titles totaling approximately 1221 acres located in Pritchard. Seller will only sell as packaged together single transaction. This property has a private gravel pit, an easement rented that allows access for a secondary ministry gravel pit, leasing land for horse pasture, timber that has been selectively logged and one existing residential tenancy. Includes 3 lakefront titles on 2 separate lakes, one title is riverfront and others have highway frontage. Most titles near the highway are in the ALR. 1/4 sections near Harper Lake are not in ALR. GST applies. Water rights, easements to neighbors and all title charges to be reviewed and approved by any buyer. Address frontages on Willow/ Poplar/ Trans Canada HWY. The lower acreages add up to approx 571.975 acres Harper/ Lakes titles 649.357 acres. AF1, see docs. Individual lots are not available for sale. (id:6769)



### Barbara Rohrmoser

RE/MAX Real Estate (Kamloops)

Phone: (250) 572-0062

<https://www.applegathgroup.com/>



RE/MAX Kelowna  
100-1553 Harvey Avenue  
Kelowna, BC,  
Canada