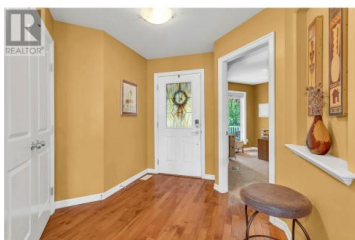




5042 South Ridge Drive Kelowna British Columbia

Upper Mission

\$1,039,000



The Upper Mission has a lot more to offer and value is now one of those offerings. The new Mission Village and multiple schools in the neighborhood improve the Upper Mission to be the ideal family neighborhood. At this price point, it is nearly impossible to find the panoramic views from Okanagan Mountain Park to Downtown Kelowna. Step out onto the Deck that the Owners have gone the extra mile to extend to take further advantage of these views and create more outdoor dining and entertaining space. The main level of the home has been designed with these views in mind. Relaxing in the living room, sitting at the dining room and cooking dinner are elevated by the possibility to soak in views of Okanagan Lake. The main floor also features the Master Bedroom with full 5 Piece Ensuite with dual sinks and a walk in closet. A large office can double as a 2nd bedroom for young children on the main floor and the mud room/laundry room that is ideally designed to give access to the 2 car garage. In the finished basement there are 2 more large bedrooms and a large den that could add a 5th bedroom if needed. A second living area downstairs gives access to the covered patio in the private backyard that is a great place to grab some shade in the hot summer. Laneway access in the rear creates a large parking stall large enough for an RV or Boat. A rare feature for the neighborhood. The home...



RE/MAX Kelowna
100-1553 Harvey Avenue
Kelowna, BC,
Canada

Todd Loeppky

Century 21 Assurance Realty Ltd

Phone: (250) 878-3076

