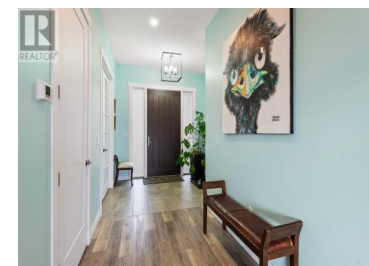
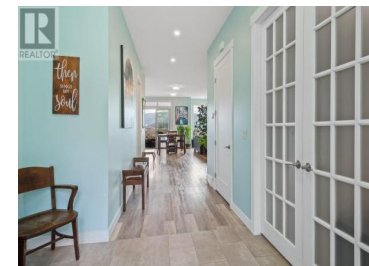




## 5048 Turtle Pond Place Vernon British Columbia

Alexis Park

# \$1,375,000



Overlooking beautiful Vernon, BC. Turtle Mountain is a newer, upscale community 5 minutes from downtown, the hospital and city offices. This lovely 4000 sq. ft. home has one of the best views on the mountain with a clear high panorama of hills, city and Okanagan Lake. 6 bedrooms, 4 bathrooms, chef's kitchen with black stainless appliances and quartz countertops in upstairs kitchen and bathrooms. Relax in the soaker tub and on the heated floors in the primary ensuite with a large walk-in closet. The second bedroom upstairs has been used as an office but was built for wheelchair access with an over-sized door into main bath. Also, upstairs has a large deck with engineered rail-less glass and gas fitting for barbq. Soaring 10 ft. ceilings throughout. There is a gas fireplace with hidden TV hook up in Living room. The outsized 2 door garage is 25 X 22 Ft. Downstairs are 2 bedrooms and a family room plus an excellent revenue generating, legal daylight-entry 2-bedroom suite with island in the kitchen. Suite has own entry and laundry. The 2 downstairs bedrooms have been used as an Airbnb; also the entire basement can be rented as a 4 bed, 2 bath suite which provides multiple options for revenue streaming. Soak in the Beachcomber hot tub as you gaze upon the city lights at night. Lovely landscaping in front with a flower garden full of perennials and a raised garden bed in ba...



**RE/MAX Kelowna**  
 100-1553 Harvey Avenue  
 Kelowna, BC,  
 Canada

**Corine Riemer**

Royal LePage Kelowna

Phone: (250) 681-4822

<http://www.thefamilyteam.ca/>

