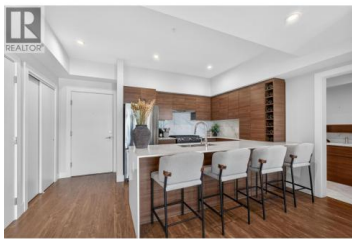




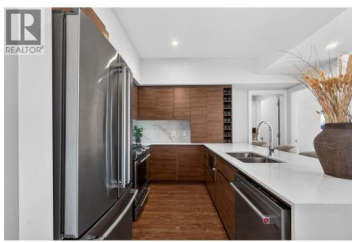
## 1925 Enterprise Way 505 Kelowna British Columbia

Dilworth Mountain

# \$479,900



Bring your big dogs, this is the one for you! This 2-bedroom, 2-bathroom condo at 1925 Enterprise Way offers over 900 square feet of modern living designed for working professionals who want style, space, and convenience without the price tag. Inside, a gas stove and quartz countertops set the tone for a kitchen worth cooking in, while the bright, open layout makes everyday living and entertaining effortless. Just outside the downtown core, you're close enough to walk to shops, restaurants, and amenities, yet far enough to actually come home and decompress, and with the Rail Trail steps away, your morning ride is already sorted. Beyond the unit itself, residents enjoy exclusive access to the Hyatt Hotel's gym and pool for a low monthly fee, a stunning 5,000 square foot rooftop patio perfect for relaxing or hosting with a view, secure bike storage, and EV charging on site. No size restrictions on pets means everyone in your household is welcome. This is luxury living at an accessible price! (id:6769)



### Teagan Adams

Vantage West Realty Inc.

Phone: (778) 583-0944

<http://www.teaganadams.com/>



RE/MAX Kelowna  
100-1553 Harvey Avenue  
Kelowna, BC,  
Canada