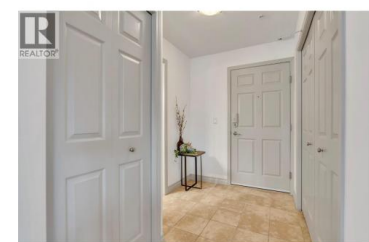


## 2113 Atkinson Street 506 Penticton British Columbia

Main South

**\$429,000**



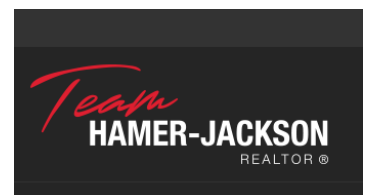
Beautiful 2 bd, 2 bth, N.E. facing corner plan in Athens Creek Towers! 950 sqft of open and efficient living space with a large master bdrm with walk-in closet and 3 pc ensuite plus a second bedroom with lots of space to double as a den, with a full guest bathroom conveniently placed nearby. The flooring throughout this unit includes 12mm laminate in the living/dining rm and bedrooms and tile in the entrance, bathrooms & kitchen. The kitchen area features an eat-in island that opens onto the living/dining rm with floor to ceiling windows, gas f/p and access onto the patio. The unit comes fully equipped with stainless steel kitchen appliances & front loading washer & dryer. Enjoy the convenient central location within walking distance to Cherry Lane Mall, grocery stores, the park, bus routes & more! Units are energy efficient with hot water on demand systems and central a/c. Secure underground parking, extra storage, 2 pets okay. Call today to book your viewing or for an info package! (id:6769)

### Shelly Weinrich

Royal LePage Locations West

Phone: (250) 488-4247

<http://www.jeanandshelly.com/>



**RE/MAX Kelowna**  
100-1553 Harvey Avenue  
Kelowna, BC,  
Canada