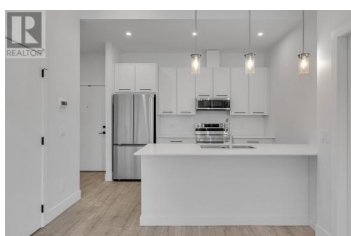
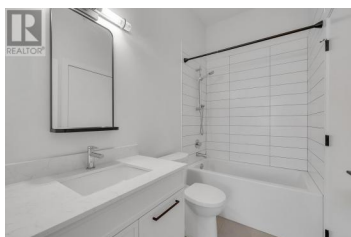




1220 Pacific Avenue 508 Kelowna British Columbia

Springfield/Spall

\$609,000



GST PAID! Experience elevated living and unparalleled convenience in this stunning 2-bedroom, 2-bathroom top-floor corner unit at the newly developed Rydell, ideally located just steps from Capri Mall. Enjoy easy access to a variety of amenities, including medical services, a pharmacy, grocery stores, Dollarama, fast food options, and more. Featuring 11-foot ceilings and a sleek, modern design, this home is perfect for those who value contemporary style, abundant natural light, and breathtaking panoramic views of both the mountains and city skyline, visible from every window and the spacious private balcony. The open-concept floor plan creates a welcoming atmosphere, filled with natural light throughout the day. High-end finishes, sleek fixtures, and premium materials give this unit a luxurious feel. Whether you're hosting friends or relaxing in peace, this home offers both comfort and elegance in every corner. With its prime location and unparalleled views, this unit is a true gem. Don't miss the chance to call this new condo your home. (id:6769)

Rebecca Mondor

Macdonald Realty Interior

Phone: (604) 329-2124



RE/MAX Kelowna
100-1553 Harvey Avenue
Kelowna, BC,
Canada