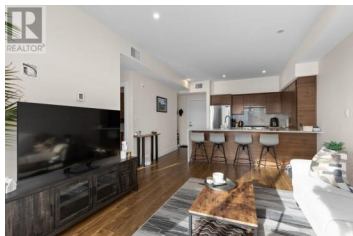
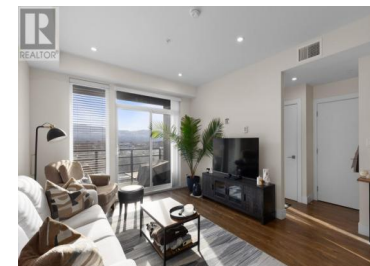
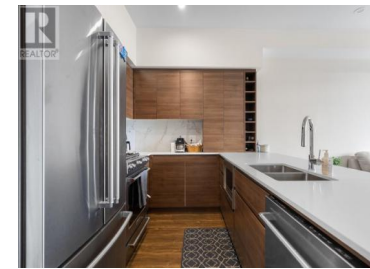




1925 Enterprise Way 510 Kelowna British Columbia
 Glenmore
\$399,999

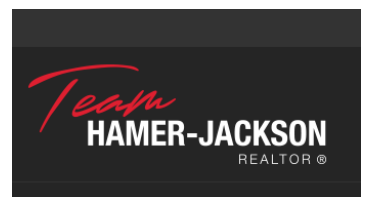


Situated on the 5th floor, this bright and inviting south-facing condo offers stunning mountain views and is equipped with central heating and cooling for year-round comfort. Inside, you'll find an open-concept layout with high ceilings and elegant modern finishes throughout. The kitchen features timeless cabinetry, Kitchen Aid premium appliances, a chic tile backsplash, and beautiful quartz countertops. It seamlessly flows into the spacious living area, which opens to a private deck perfect for enjoying panoramic views. The generously sized bedroom accommodates a king-sized bed and includes a large window. Enjoy the spacious well-appointed bathroom. Additional features include in-unit laundry and secure underground parking for peace of mind. Enjoy the building's rooftop deck or take advantage of a membership to the nearby Hyatt amenities, including a pool, hot tub, and fitness center. This pet-friendly and rental-friendly property is an ideal investment in the heart of Kelowna, offering both comfort and convenience. (id:6769)

John P. Douglas

Sotheby's International Realty Canada

Phone: (250) 826-7265



RE/MAX Kelowna
 100-1553 Harvey Avenue
 Kelowna, BC,
 Canada