



## 510-520 Beaver Lake Road Kelowna British Columbia

Lake Country South West

**\$986,300**



I-3 Zoned Property with an older 2 story single family residence plus a vacant lot. The area is in a Transition area to Commercial / Industrial. Many possibilities for redevelopment or operate a home business/office. Total property size 120 ft frontage x 100 ft feet deep (.28 acres). On Municipal water. (id:6769)

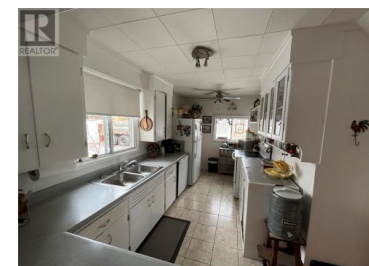


**Phil Swetlikoff**

RE/MAX Kelowna

Phone: (250) 470-2222

<http://www.access-kelowna.com/>



RE/MAX Kelowna  
100-1553 Harvey Avenue  
Kelowna, BC,  
Canada