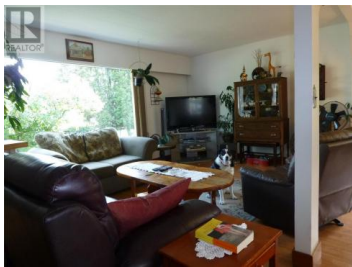




510 / 520 Beaver Lake Road Kelowna British Columbia

Lake Country South West

\$986,300



I-3 Zoned Property with an updated older single family residence plus a vacant lot. The area is in a transition to Commercial / and light Industrial. The property offers many possibilities from a home business location with office space or redevelopment to light Industrial. Total property size 120 frontage x 100 ft deep (.28 acres). On municipal water. (id:6769)

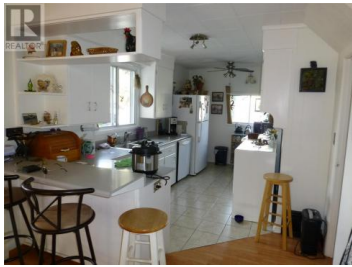
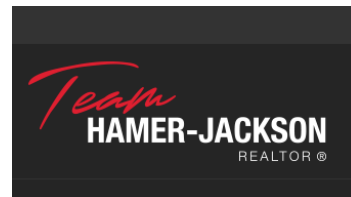


Phil Swetlikoff

RE/MAX Kelowna

Phone: (250) 470-2222

<http://www.access-kelowna.com/>



RE/MAX Kelowna
100-1553 Harvey Avenue
Kelowna, BC,
Canada