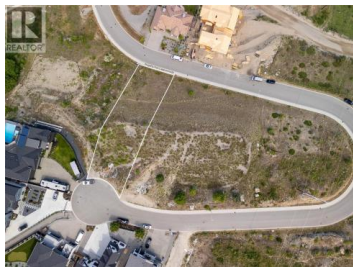




## 513 Trumpeter Road Kelowna British Columbia

Kettle Valley

# \$749,900



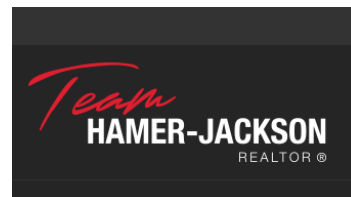
Positioned with commanding, panoramic views of Okanagan Lake, the city skyline, and the mountain valley, this premium 0.398 acre residential lot offers exceptional development versatility in the highly desirable Kettle Valley neighborhood. Benefiting from this fully serviced, ready to be constructed, the expansive parcel provides a turnkey infrastructure foundation with public road access. Under current small scale multi unit housing parameters, the property's generous dimensions seamlessly accommodate either a custom luxury estate or a sophisticated multi unit fourplex. To streamline the construction process, architectural drawings can be made available for both design options. Located just moments from acclaimed local wineries, pristine beaches, scenic hiking trails, and premier shopping, this rare land offering represents an unparalleled opportunity to capitalize on the premier North Okanagan lifestyle. (id:6769)

### Theresa Fabian

Royal LePage Downtown Realty

Phone: (250) 540-2825

<https://theresafabian.royallepage.ca/>



RE/MAX Kelowna  
100-1553 Harvey Avenue  
Kelowna, BC,  
Canada