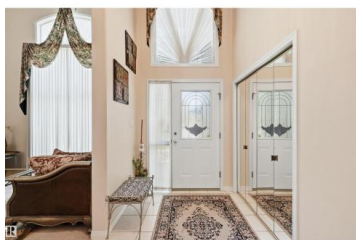
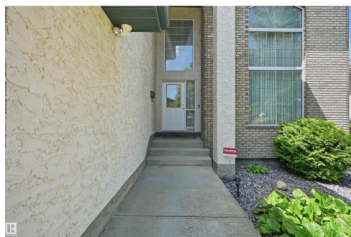




Edmonton Alberta

Bulyea Heights

\$824,800



WELCOME TO THIS WELL MAINTAINED FAMILY HOME BACKING ONTO TREES AND A WALKWAY, OFFERING PRIVACY AND A PICTURESQUE SETTING. FROM THE MOMENT YOU WALK IN YOU WILL LOVE THE IMPRESSIVE LIVING ROOM AND FORMAL DINING ROOM WITH SOARING CEILINGS. THE CHEF IN THE FAMILY WILL LOVE THE BRIGHT AND SPACIOUS KITCHEN FEATURING ELEGANT QUARTZ COUNTERTOPS, LARGE ISLAND AND A CORNER PANTRY. THE ADJOINING FAMILY ROOM IS WARM AND INVITING WITH A FIREPLACE AND VIEWS OF THE BACKYARD. THIS HOME HAS 4 BEDROOMS UP AND A MAIN FLOOR DEN. FULLY FINISHED BASEMENT PROVIDES PLENTY OF ADDITIONAL LIVING & ENTERTAINING SPACE. WHETHER YOU ARE HOSTING FAMILY & FRIENDS OR WORKING FROM HOME THIS BEAUTIFUL PROPERTY OFFERS GREAT SPACE, COMFORT AND LOCATION!! LOCATED CLOSE TO SCHOOLS, PARKS, WALKING TRAILS, SHOPPING AND MORE!! A MUST TO SEE (id:6769)

Alan H. Gee

RE/MAX Elite

Phone: (780) 498-2187

<http://www.alangee.com/>



RE/MAX Kelowna
100-1553 Harvey Avenue
Kelowna, BC,
Canada