



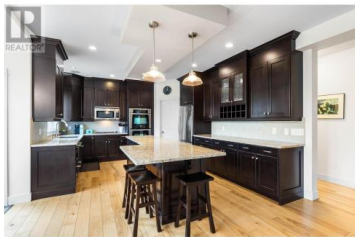
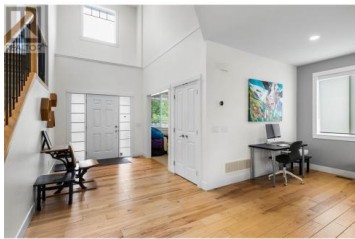
5162 Chute Lake Crescent Kelowna British Columbia

Upper Mission

\$1,548,888



Tucked away on a quiet crescent stumbling distance from Summer Hill Winery, this amazing family home is walking distance to Chute Lake Elementary and biking distance to the new Canyon Falls Middle School. **OVERSIZED** is the key descriptor of this home. Grand entrance leads to a huge living room, large island chef's kitchen with **LOADS** of cabinets, double wall ovens and a spacious walk through pantry. Lovely den, cute half bath and well designed mud room complete the main floor. A large deck off the kitchen is your lookout and access to the yard. Upstairs you will find **FIVE** bedrooms. Three bedrooms including a generous primary with 5 piece ensuite are in the "west wing". To the east, another wing boasts two more bedrooms, a full four piece bathroom **AND** access to a multi use area with **SEPARATE** entrance - home office? salon? family gym? nanny suite? BnB suite? rec room???? If that isn't enough house for you yet.... we aren't finished! The walkout basement has a huge rec room, another bedroom and full bathroom, **PLUS** the coolest kid hideaway and a massive storage area. Large, flat, pool sized lot. Double attached garage. Quiet family neighbourhood. This is the perfect home for a family and/or a work from home lifestyle! (id:6769)



Maureen Yakimchuk

Century 21 Assurance Realty Ltd

Phone: (250) 870-2510

<https://maureen-yakimchuk.c21.ca/>



RE/MAX Kelowna
100-1553 Harvey Avenue
Kelowna, BC,
Canada

