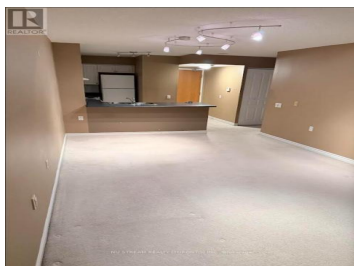




## 9017 Leslie Street 517 Richmond Hill Beaver Creek Business Park Ontario

Beaver Creek Business Park

**\$2,200**



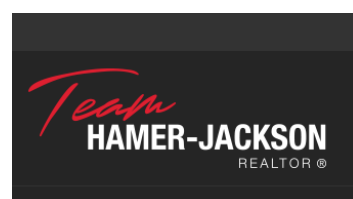
Luxury 'The Grand Parkway' In The Most Desirable Area In Richmond Hill, 25000 Sf Health Club, 24 Hrs Gatehouse, Close To 407 & 404, Connected To Hotel & Shops At Parkway. Walk To All Amenities, Times Square, Viva Transit & Hwy 7. (id:6769)



**DAVID CHUN YAT MA**

NU STREAM REALTY (TORONTO) INC.

Phone: (905) 709-0828





**RE/MAX Kelowna**  
100-1553 Harvey Avenue  
Kelowna, BC,  
Canada