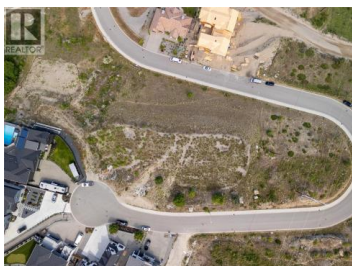




519 Trumpeter Road Kelowna British Columbia

Kettle Valley

\$749,900



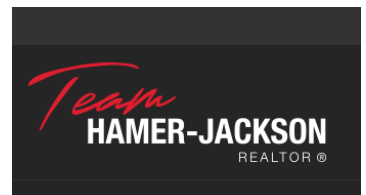
Positioned with sweeping panoramic views of Okanagan Lake, the city skyline, and the valley, this expansive 0.398 acre residential lot presents a premier architectural opportunity in the Kettle Valley neighborhood. The fully serviced premium parcel with public road access, offers a versatile canvas for high end development. Reimagined to accommodate a luxury fourplex, the property's generous scale allows for an upscale multi unit project with premium outdoor living areas and ample parking space. Alternatively, it remains an ideal site for a custom estate of up to 6,900 sq ft with plenty of room for a large garage and pool. The location balances elevated privacy with effortless proximity to the region's finest lifestyle amenities, including local wineries, beaches, hiking trails, and shopping. Architectural drawings and plans can be made available, allowing developers or investors to maximize the dramatic topography and vistas of this unique Okanagan property. (id:6769)

Theresa Fabian

Royal LePage Downtown Realty

Phone: (250) 540-2825

<https://theresafabian.royallepage.ca/>



RE/MAX Kelowna
100-1553 Harvey Avenue
Kelowna, BC,
Canada