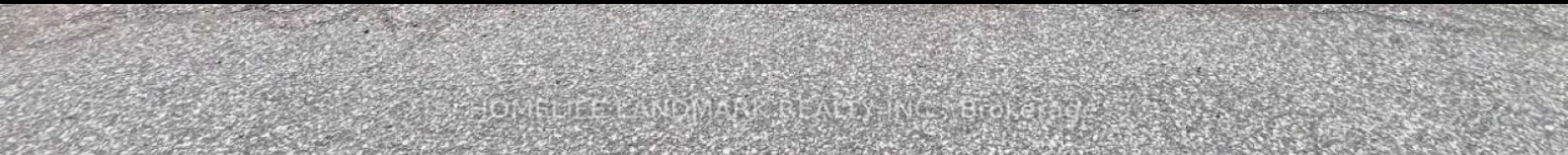




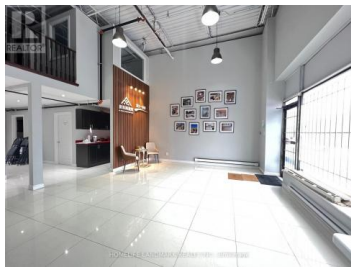
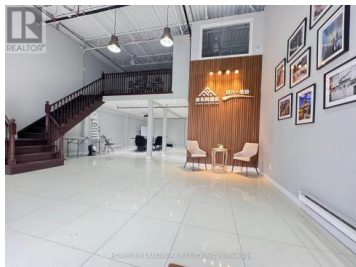
52 West Beaver Creek Road Richmond Hill Beaver Creek Business Park Ontario

Beaver Creek Business Park

\$4,500



HOMELIFE LANDMARK REALTY INC. Brokerage



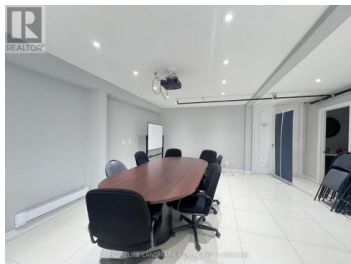
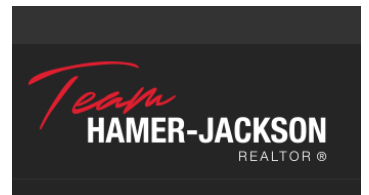
Location In Prestigious Beaver Creek Business Park. Excellent Industrial Area With Clear Height. Close To Highways 407, Hwy7 & 404. Lots of Upgrades, 4 Offices, 2 Bathrooms (One With Shower Room), 1Kitchenette, 2 Meeting Areas, 1 Reception)... Appx. 1550 Sqft Including Mezzanine. ** The warehouse area is excluded. ** (id:6769)



SCOTT XUE

HOMELIFE LANDMARK REALTY INC.

Phone: (905) 305-1600



RE/MAX Kelowna
100-1553 Harvey Avenue
Kelowna, BC,
Canada