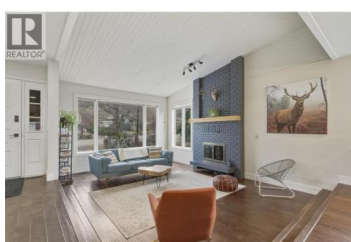


## 535 TOD MOUNTAIN Road Kamloops British Columbia

Heffley

**\$824,900**

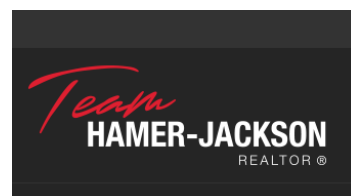


Welcome to 535 Tod Mountain Road -- a tastefully updated home in Heffley Creek offering space, privacy, and convenience. Enjoy peaceful rural living while being just 15 minutes from Kamloops and a short drive to Sun Peaks. The home features a large family kitchen, three bedrooms on the main floor, and a primary bedroom with a 4-piece ensuite. Mechanical updates include a newer furnace and hot water tank, making this home move-in ready. Set on a large, private lot, the property offers beautiful gardens, a peaceful backyard, abundant parking, and an attached double garage. This is an ideal opportunity for those looking to get out of the city without giving up easy access to amenities and recreation. (id:6769)

**Connor Shelton**

RE/MAX Real Estate (Kamloops)

Phone: (250) 377-5186



**RE/MAX Kelowna**  
100-1553 Harvey Avenue  
Kelowna, BC,  
Canada