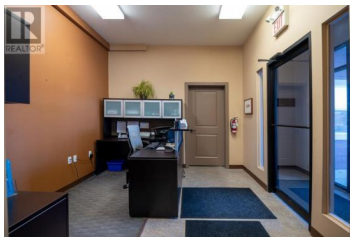




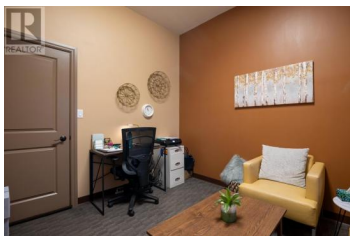
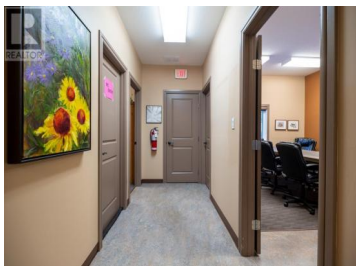
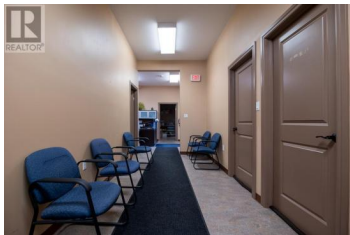
5408 50 Avenue Athabasca Alberta

Athabasca Town

\$459,900



Multi tenant commercial office building located on a high traffic street in Athabasca. This single story building was constructed in 2007 with a full addition made to double the size in 2014. Currently leased out to several professionals including a law firm, psychologist, massage therapist and Environmental Consultant firm. Main reception area off the entrance and exterior entry doors on most office spaces. There are a multitude of uses this building can offer or purchase it as is and have a rental investment that caters to many tenants with large firms or small businesses. Athabasca is a centrally located northern Alberta community 1.5 hours north of Edmonton, 2.5 hours south of Fort McMurray and 1.5 hours south of Slave Lake. (id:6769)



SHAHIRA BURY

ROYAL LEPAGE COUNTY REALTY

Phone: (780) 675-0800



RE/MAX Kelowna
100-1553 Harvey Avenue
Kelowna, BC,
Canada