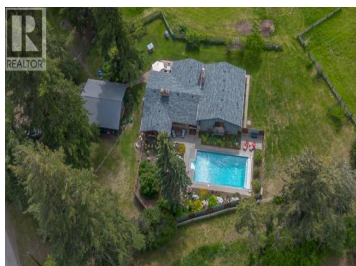




## 5425 Petworth Road Coldstream British Columbia

Mun of Coldstream

# \$1,599,900



Welcome to this beautiful Coldstream/Lavington home and acreage with mid century modern style and craftsmanship. Situated on a private, beautifully landscaped 6 acres, this home has stunning views of the Coldstream Valley and mountains. The main floor offers an open concept eat-in kitchen and family room plus a formal dining room. The formal living room boasts vaulted ceilings, floor to ceiling windows and a cozy wood fireplace. Upstairs features 3 beds & 2 full baths, including a spacious primary suite with a deck overlooking the pool and a beautifully renovated spa-like ensuite. The lower level includes an in-law suite with bedroom, living room, kitchen and full bathroom, while the basement offers a large rec room, workshop, and storage areas. Additional highlights include a stunning pool area with heated in-ground salt water pool, poolhouse with natural gardens, new roofs on main house and garage, custom-designed siding on south facing wall and quality wood finishings throughout. A Detached Double garage with large windows is set up as a shop. The 1-bedroom barndominium has an open concept kitchen/living area with private yard and laundry, ideal for guests, family, or rental income. The pole barn has stalls for horses, work area and hen house. Most doors and window and trim have been replaced with solid wood. Bring your ATV's, bikes & skis, it's near Noble Canyon Recreati...

**Steve Bertram**

Canada Flex Realty Group

Phone: (250) 306-7575



**RE/MAX Kelowna**  
 100-1553 Harvey Avenue  
 Kelowna, BC,  
 Canada

